

# BUTTE SUBBASIN

## Sustainable Groundwater Management

*Groundwater is increasingly relied upon to provide our drinking water, nourish our agriculture, and support our environment. Sustainable and responsible management of our surface and groundwater supplies is the ongoing mission we have all been committed to for many years.*

### Sustainable Groundwater Management Act

**What is SGMA?** California enacted the Sustainable Groundwater Management Act (SGMA) in 2014 to better manage our groundwater over the long term, emphasizing that groundwater is best suited to be managed at the local level.

**What is sustainable groundwater management under SGMA?** Management and use of groundwater in a way that avoids Undesirable Results. The undesirable results to be avoided in the Butte Subbasin\* are:



Lowering of  
Groundwater Levels



Reduction of  
Groundwater Storage



Land  
Subsidence

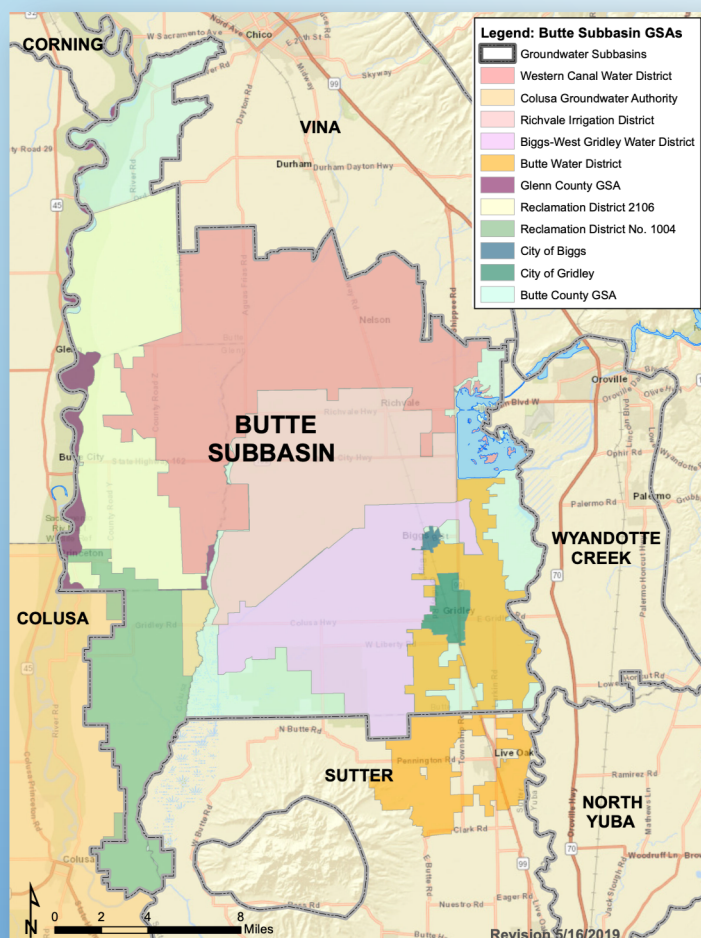


Surface Water  
Depletion



Water Quality  
Degradation

*\*Seawater intrusion is also an undesirable result under SGMA, but does not apply to the Butte Subbasin*



### What does SGMA require?

Basins must be managed by Groundwater Sustainability Agencies (GSAs). GSAs must develop Groundwater Sustainability Plans (GSPs) for reaching long-term sustainability. The following independent GSAs have signed a cooperation agreement to develop, adopt and implement a single GSP for the Butte Subbasin. A copy of the Cooperation Agreement is available [here](#).

There are eleven GSAs in the Butte Subbasin (See map):

- [Biggs-West Gridley Water District](#)
- [Butte County](#)
- [Butte Water District](#)
- [City of Biggs](#)
- [City of Gridley](#)
- [Colusa Groundwater Authority](#)
- [Glenn County](#)
- [Reclamation District 1004](#)
- [Reclamation District 2106](#)
- [Richvale Irrigation District](#)
- [Western Canal Water District](#)

You can find your responsible GSA by address [here](#).

## What is contained in a Groundwater Sustainability Plan?

GSPs must assess groundwater conditions and articulate how groundwater management will avoid adverse impacts to beneficial users. GSPs must consider projected conditions such as changes in climate, water use demand, groundwater recharge, etc. Methods to achieve and maintain sustainability may include managing pumping, increasing water conservation, and creating additional water supplies.

## Groundwater Sustainability Plan

**Who will develop the GSP?** The GSAs are coordinating the development of a single GSP for the Butte Subbasin. The **Butte Subbasin Advisory Board (BAB)**, which meets every other month and is open to the public in compliance with the Brown Act, consists of representatives from each GSA and makes recommendations to their GSA Boards concerning development and implementation of the GSP. Public comments will be taken throughout, and there will be a public review period of the draft GSP in late 2021. The final adopted GSP is due to CA Department of Water Resources (DWR) by January 2022.

## SGMA Timeline



### How might SGMA affect me?

The Butte Subbasin is in healthy conditions. The GSP will include projects or management actions to maintain the basin's long-term sustainability. Under SGMA, beneficial uses of groundwater include domestic, municipal, tribal, agricultural, industrial, and environmental uses. SGMA has the potential to impact those who heavily rely on groundwater, including agricultural and municipal users. Domestic users (single well, no crops or large landscapes) are managed differently under SGMA, but still have the potential to be affected under certain circumstances. Therefore, participation is integral for effective GSP development and implementation.

**Your early and continued engagement is crucial to developing a groundwater sustainability plan that considers your interests!**

## Learn More & Get Involved



### Receive Updates

Sign up for your GSA's interested parties list.



### Contact Your GSA

Talk to your GSA representative



### Attend Meetings

Attend public workshops, BAB, and GSA Board meetings

Find more information, including contact and BAB meeting information and links to GSA information at

<https://www.buttebasingsgroundwater.org/>